

# Hybrid Cloud Services

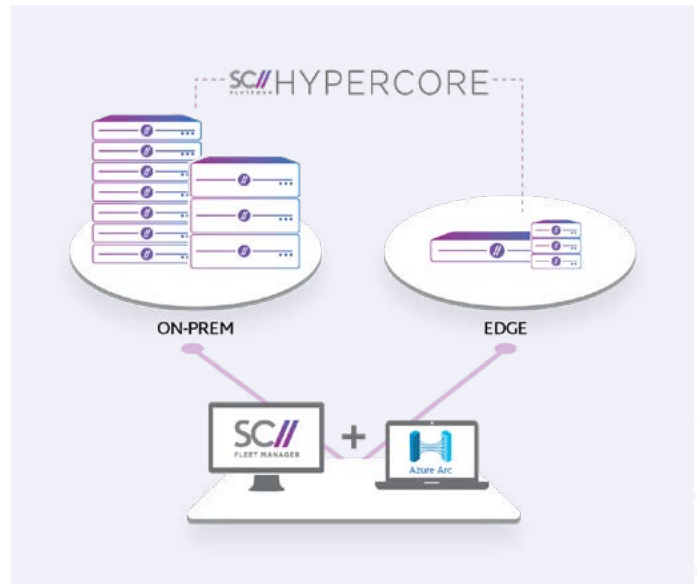
with SC//Platform and Azure



## Combine the cloud-like simplicity of SC//Platform with Azure integration to deliver hybrid flexibility and resilient edge computing

Scale Computing Platform offers cloud-like simplicity, high availability, and scalability in a self-healing system for running applications at remote data centers or the network edge. It includes SC//HyperCore, an autonomous IT infrastructure management software, and SC//Fleet Manager for centralized monitoring and orchestration of distributed infrastructure. By integrating with Azure cloud services, SC//Platform enables a hybrid cloud approach tailored to the specific needs of each application, such as resiliency, latency, governance, compliance, and cost.

SC//Platform supports all on-premises workloads while integrating with Azure and other public cloud providers. IT teams can give developers the flexibility to use their preferred cloud tools and processes while maintaining a hybrid cloud environment.



## Connecting SC//Platform to Azure Hybrid Services

Extend your Azure Cloud to manage on-premises deployments of Windows Server (as well as Windows IoT and desktop), most popular Linux OS's, as well as containers and Kubernetes by using Azure hybrid services. This includes virtual machine and container-based workloads running on SC//Platform across one or thousands of locations.

Further, SC//Platform automation and orchestration capabilities can easily automate the deployment and lifecycle management of those workloads, and register those workloads securely into your Azure Cloud tenant for ongoing monitoring and management utilizing Azure hybrid services.

## Managing On-Premises Infrastructure from Azure

### Azure Arc

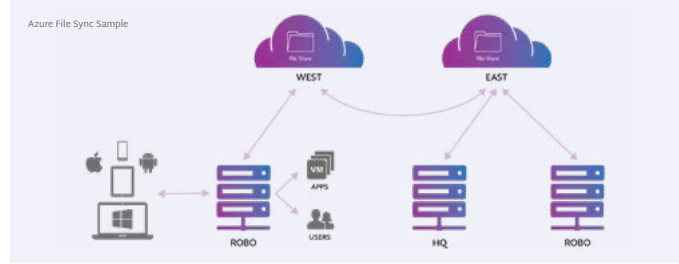
Azure Arc lets organizations support existing applications and develop cloud-native applications with a consistent development, operations, and security model regardless of where those applications live, including edge computing environments provided by SC//Platform.

Monitor servers, both on-premises and in the cloud, and configure alerts with Azure Monitor. Apply governance policies to your on-premises servers through Azure Policy using Azure Arc. For SC//HyperCore VMs, the Azure Arc agent is loaded inside the guest OS and automatically connects to the Azure Cloud.

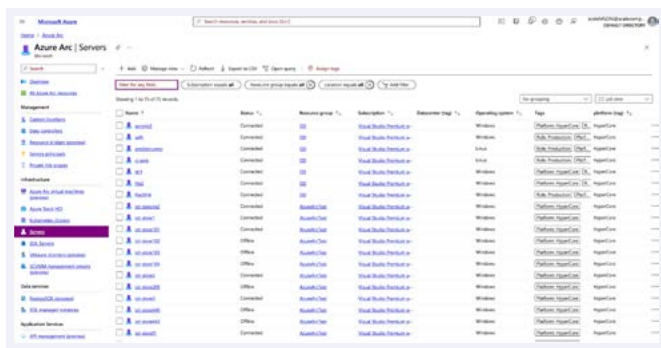
# Utilizing Azure Cloud Storage

## Azure File Sync

Extend effective storage capacity and sync your SC//HyperCore file server VMs and data to the cloud using [Azure File Sync](#). Azure File Sync will archive or “tier” older files from on-premises file servers running on SC//HyperCore to Azure storage automatically. Files that have been archived to the cloud still appear as available and are retrieved from Azure cloud storage automatically if accessed.



# Leveraging Azure for Public Cloud Access to On-Premises Resources



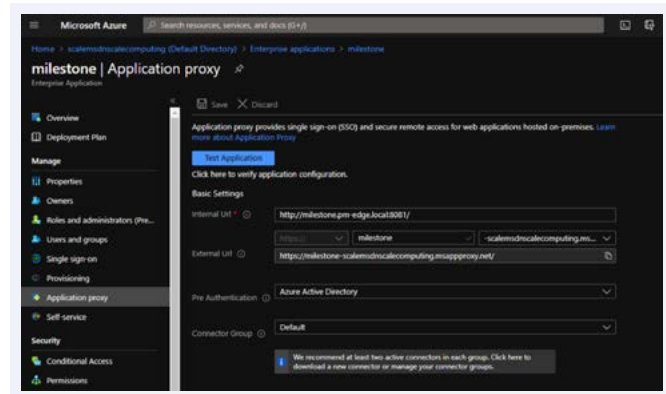
## Azure Application Proxy

The Azure Application Proxy allows remote users to access web-based applications running on-premises by logging into the Azure AD portal without the need to VPN directly into the on-premises site. This can be used to access the SC//HyperCore web-based UI from edge locations and any other web-based application or portal (or REST API) that might run on-premises but benefit from secure, authenticated remote access.

## Azure AD Integration

Many organizations leverage [Azure AD Connect](#) to sync existing on-premises Active Directory accounts to Azure AD to allow for centralized, cloud-based authentication and management.

All current versions of SC//HyperCore can use Azure AD as an OpenID Connect (OIDC) single sign-on source, Azure’s multi-factor authentication (MFA), and supported third-party MFA solutions to secure access to SC//HyperCore systems. Azure AD / Microsoft 365 Accounts can also be used for single sign-on to the SC//Fleet Manager console.



*Microsoft Azure complements SC//Platform for the perfect hybrid cloud experience. Beyond the integrations described here - further integration is possible with solutions such as Azure IoT Core, Azure Networking services and many others. For more information, contact your Scale Computing partner or account manager.*



CORPORATE HEADQUARTERS

525 S. Meridian Street - 3E // Indianapolis, IN 46225

P. +1 317-856-9959 // [scalecomputing.com](http://scalecomputing.com)